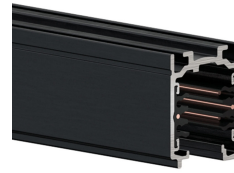


BINARIO A 6 CONDUTTORI EUROSTANDARD PLUS

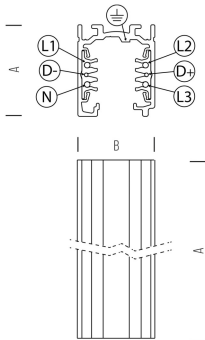


MISURE mm	VARIANTE	CODICE	EAN
1	NERO	9000-1/B-ST	9000-1/B-ST0605
1	BIANCO	9000-1/W-ST	9000-1/W-ST0605
2	NERO	9000-2/B-ST	9000-2/B-ST0605
2	BIANCO	9000-2/W-ST	9000-2/W-ST0605
3	NERO	9000-3/B-ST	9000A-3/B-ST0005
3	BIANCO	9000-3/W-ST	SHT000009000-3/W-ST001
4	NERO	9000-4/B-ST	
4	BIANCO	9000-4/W-ST	

IP 20



DALI



DIMENSIONI	A	B	C
1	37,8	31,4	1000
2	37,8	31,4	2000
3	37,8	31,4	3000
4	37,8	31,4	4000