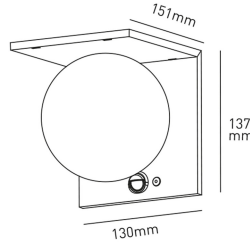
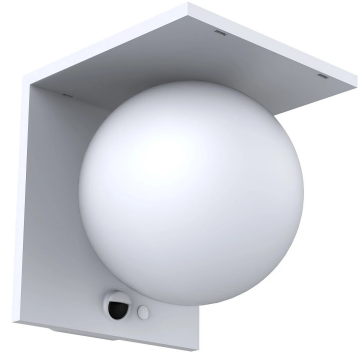
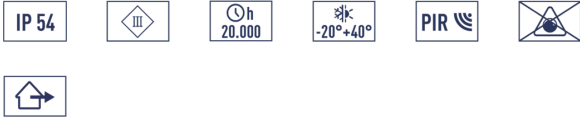


**MOON**  
**Solar wall lamp**  
**MOONB**  
5,2 W - 1000lm - 4000K



DIMENSIONS	A	B	C
1	130	137	151

GENERAL INFORMATIONS	
Code	MOONB
Ean	8031453031152
Family	MOON
Technology	LED
Variant	BIANCO
Operating temperature (° C)	-20 + - 40
Years warranty	2
(RAL) Colour	9016
LIGHTING DATA	
Light colour	CW
CCT (K)	4000
Luminous flux (lm)	1000
Beam (°)	270
TECHNICAL FEATURES	
Power (W)	5,2
Supply voltage (V) / Max (V)	3,7 / 3,7
Insulation class	3
Nominal life (h)	20000
PACKAGING	
Packaging	BOX
Pack	1 / 18

## MOON Solar wall lamp

### MOONB

5,2W - 1000lm - 4000K

- Outdoor polycarbonate wall light with dusk sensor and PIR presence detector
- Easy installation: mains connection not needed
- Lithium-Ion battery 3,7V, 2000mAh, 7,4Wh
- 4 working mode

#### OPERATION

Press the button for about 2 seconds to turn the projector on and off. Press it again to switch between operating modes. When the appliance is first switched on, it will turn on in mode 1.

MODE 1: The projector will remain on at 100% emission from dusk to dawn or until depletion.

MODE 2: The projector will remain on at 25% emission from dusk to dawn or until depletion of battery power.

MODE 3: The projector will remain on at 10% emission from dusk to dawn or until depletion of battery power. When motion within 1-5 meters is detected, it will light up at 100% of the emission and remain on for 30 seconds following the last detected movement.

MODE 4: The projector will remain off. When motion within 1-5 meters is detected, it will light up at 100% of the emission and remain on for 30 seconds following the last detected movement.

